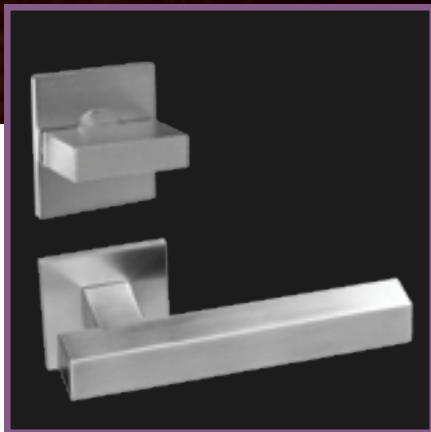




# 2010 NEW PRODUCTS

## ORION



Σ207



DELTA



Σ781

T 877.339.8281  
F 866.667.5633  
info@ahi-arch.com  
www.ahi-arch.com



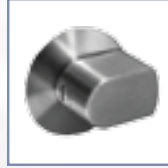
Σ206 (shown with Σ104 lever)



Σ207 (shown with Σ122 lever)

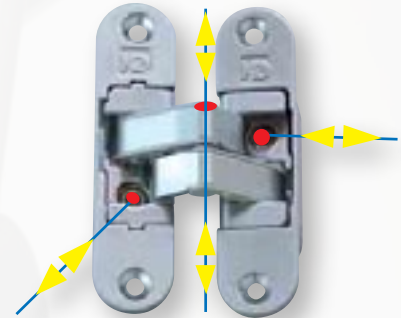
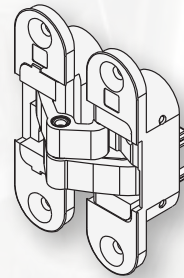
## FLUSH TRIM SETS

- 1-2mm rose projection
- Concealed fixings
- Stainless steel construction
- Compatible with all AHI mechanisms in most functions



## CONCEALED HINGES

- 3 axis adjustable hinge
- Completely recessed
- 180° movement
- Supports doors up to 90kg (198lbs)



Σ781

## BARN DOOR SYSTEMS

### ORION

- Made in Italy
- Single piece solid track cut to length
- Wood or glass doors
- Anti-jump device
- Special order

### DELTA

- Made in Portugal
- Modular, machined, hollow track
- Wood or glass doors
- Anti-jump device
- Stock item

### Σ500 SERIES

- Single piece hollow track cut to length
- Wall-mounted
- Wood doors
- Stock item



7544 Côte de Liesse  
St-Laurent, QC  
H4T 1E7  
Canada