

CI500

EU1556SS

EU1625

AM9156

TL1725

Σ4650

PT35

TL1661

AM8548 50MM

TB3622

PKT3535

CI125

EU2061 25

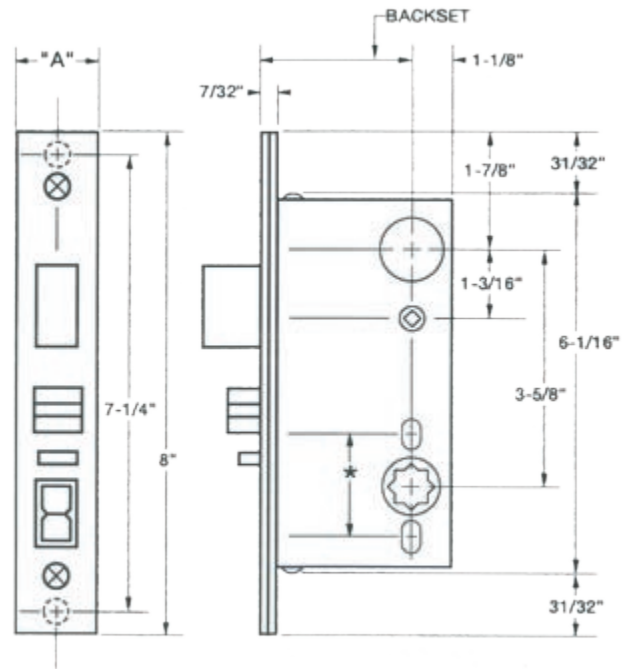
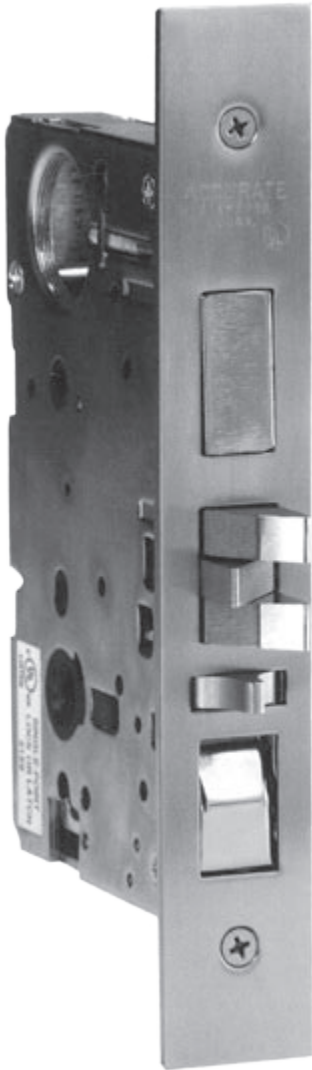
EU2000



MORTISES

AM9100

Heavy duty, Grade 1 American mortise lock



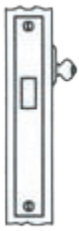
APPLICATIONS

UL & ULC listed for high traffic commercial, institutional and industrial uses where durability and security are of the greatest concern. Lock function for use with C Series cylinders.

STANDARD FEATURES

CASE	Heavy gauge plated steel
FRONT	Heavy gauge stainless steel - Adjustable bevel
FACEPLATE	1 1/4" Stainless steel (1" available)
LATCH BOLT	Brass anti-friction type
DEADBOLT	Forged brass with hardened steel inserts
BACKSET	2 3/4" (70mm) (2 1/2", 3 3/4", 5", & 6" available)
STRIKE PLATE	Stainless steel ANSI standard 4 7/8" x 1 1/4" x 1 1/8" lip to center
THRU BOLTING	1 1/2" - 1 11/16" (38mm) c-to-c
THUMBTURN HUB	3/16" (5mm) on the diamond
HUB	8mm square
DISTANCE	Hub to cylinder: 3 5/8" c-to-c Hub to thumbturn: 2 7/16" c-to-c
CYLINDER	Accepts 15/32" diameter threaded round mortise cylinder (C Series)
UL-LISTED	All locks are UL-listed for 3 hours UL label stamped on front (ULC available) UL sticker on case

Cylinder not included.



9101 Deadlock

- Dead Bolt By Key Outside
- No Inside Operation



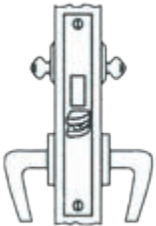
9102 Deadlock

- Dead Bolt By Key Either Side



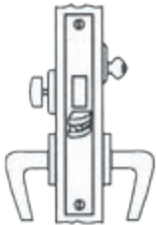
9103 Deadlock

- Dead Bolt By Key Outside and Turnpiece Inside



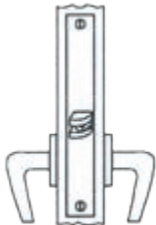
9122 Store Door Lock

- Latch Bolt By Lever Either Side
- Dead Bolt By Key Either Side



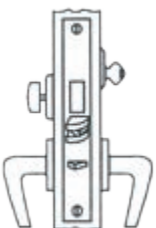
9124 Dormitory, Entrance or Storeroom Lock

- Latch Bolt By Lever Either Side
- Dead Bolt By Key Outside and Turnpiece Inside
- A turn of inside lever retracts latch and dead bolt simultaneously - automatically unlocking outside lever



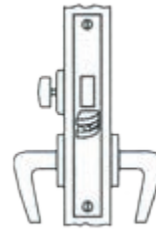
9125 Passage and Closet Latch

- Latch Bolt By Lever Either Side



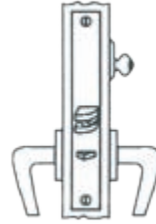
9134 Hotel or Motel Lock

- Latch Bolt By Lever Inside and Guest or Master Key Outside
- Outside Lever Always RIGID
- Dead Bolt By Turnpiece Inside and Emergency Key Only Outside
- A Turn of Inside Lever Retracts Latch and Dead Bolt Simultaneously
- Auxiliary Latch Deadlocks Latch Bolt



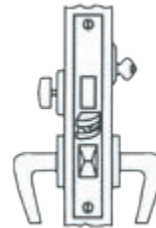
9139 Privacy Bedroom or Bathroom Lock

- Latch Bolt By Lever Either Side
- Dead Bolt By Turnpiece Inside and Emergency Key Outside
- A turn of inside lever retracts latch and dead bolt simultaneously - automatically unlocking outside lever



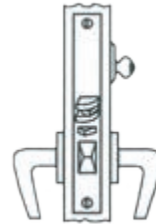
9145 Classroom Lock

- Latch Bolt By Key Outside and Lever Either Side Unless Outside Lever is Locked By Key Outside
- Auxiliary Latch Deadlocks Latch Bolt



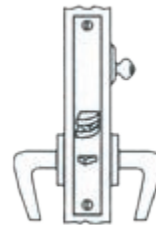
9148 Entrance or Apartment Lock

- Latch Bolt By Key Outside and Lever Either Side Unless Outside Lever is Locked By Toggle-Action Stop
- Dead Bolt By Key Outside and Turnpiece Inside
- Turning inside lever retracts latch and dead bolt simultaneously
- Outside lever remains locked



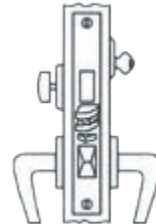
9156 Classroom, Entrance or Office Lock

- Latch Bolt By Key Outside and Lever Either Side Unless Outside Lever is Locked By Toggle-Action Stop
- Auxiliary Latch Deadlocks Latch Bolt



9159 Storeroom or Closet Lock

- Latch By Lever Inside and Key Outside
- Outside Lever always RIGID
- Auxiliary Latch Deadlocks Latch Bolt

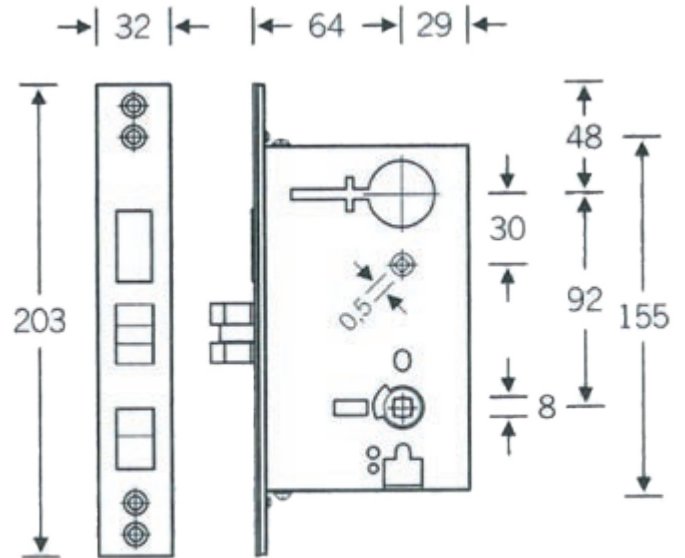


9167 Entrance or Apartment Lock

- Latch Bolt By Key Outside and Lever Either Side Unless Outside Lever is Locked By Toggle-Action Stop
- Dead Bolt By Key Outside and Turnpiece Inside
- Turning inside lever retracts latch and dead bolt simultaneously
- Outside lever remains locked
- Auxiliary Latch Dead Locks Latchbolt and Prevents Manipulation of Locked Toggle Action Stop

AM9100ELEC

Heavy duty, Grade 1 American electric mortise lock



APPLICATIONS

UL & ULC listed for high traffic commercial, institutional and industrial uses where durability and security are of the greatest concern. Lock function for use with C Series cylinders.

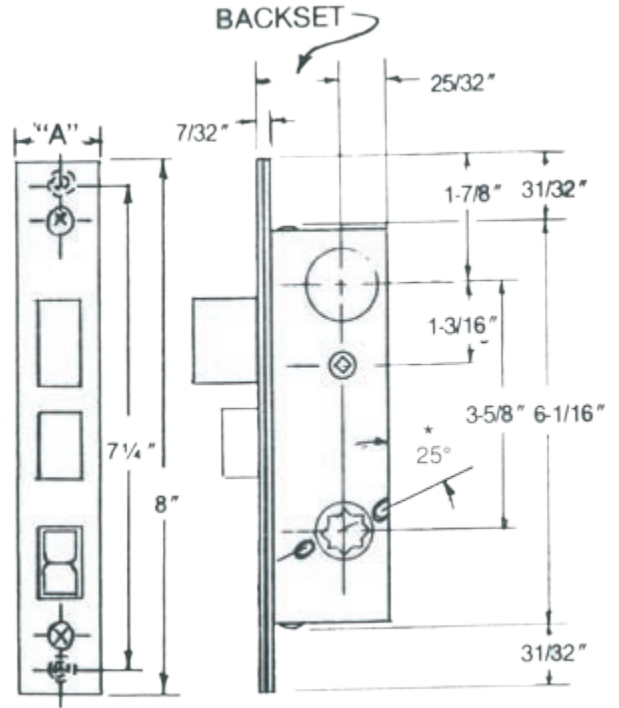
STANDARD FEATURES

CASE	Heavy gauge plated steel
FRONT	Heavy gauge stainless steel - Adjustable bevel
FACEPLATE	1 1/4" Stainless steel (1" available)
LATCH BOLT	Brass anti-friction type
DEADBOLT	Forged brass with hardened steel inserts
BACKSET	2 3/4" (70mm) (2 1/2", 3 3/4", 5", & 6" available)
STRIKE PLATE	Stainless steel ANSI standard 4 7/8" x 1 1/4" x 1 1/8" lip to center
THRU BOLTING	1 1/2" - 1 11/16" (38mm) c-to-c
THUMBTURN HUB	3/16" (5mm) on the diamond
HUB	8mm square
DISTANCE	Hub to cylinder: 3 5/8" c-to-c Hub to thumbturn: 2 7/16" c-to-c
CYLINDER	Accepts 15/32" diameter threaded round mortise cylinder (C Series)
UL-LISTED	All locks are UL-listed for 3 hours UL label stamped on front (ULC available) UL sticker on case

Cylinder not included.

AM8500

Narrow style American mortise lock



APPLICATIONS

Ideal for narrow style doors with narrow backsets. please specify backset. Lock function for use with C Series cylinders.

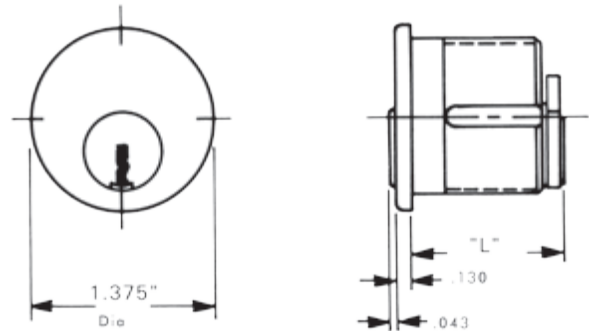
STANDARD FEATURES

CASE	Heavy gauge plated steel
FRONT	Heavy gauge stainless steel - Adjustable bevel
FACEPLATE	1 1/4" Stainless steel (1" available)
LATCH BOLT	Brass anti-friction type
DEADBOLT	Forged brass with hardened steel inserts
BACKSET	1 1/4", 1 1/2", 1 3/4", 2", 2 1/4", 2 1/2"
STRIKE PLATE	Stainless steel ANSI standard 4 7/8" x 1 1/4" x 1 1/8" lip to center
THRU BOLTING	1 1/2" - 1 11/16" (38mm) c-to-c
THUMBTURN HUB	3/16" (5mm) on the diamond
HUB	8mm square
DISTANCE	Hub to cylinder: 3 5/8" c-to-c Hub to thumbturn: 2 7/16" c-to-c
CYLINDER	Accepts 15/32" diameter threaded round mortise cylinder (C Series)

Cylinder not included.

C Series

North American mortise cylinder



STANDARD FEATURES

5 pin
Schlage C keyway
Works with all AHI American mortise locks

STOCK SIZES

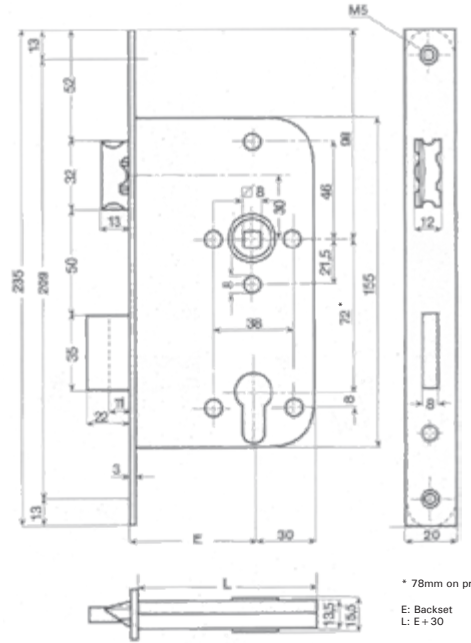
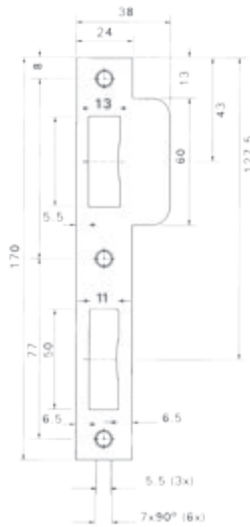
	"L"
C1000	1"
C1125	1 1/8"
C1250	1 1/4"
C1500	1 1/2"
C2000	2"

FINISHES

Aluminium - 628
Black - 622
Polished Brass - 605
Satin Chrome - 626
Satin Nickel - 619
Satin Stainless Steel - 630
Titanium Bronze
Titanium Black
Titanium Dark Bronze
Titanium Gold

EU1000SS

Reversible heavy duty European mortise lock - All Stainless Steel



* 78mm on privacy
E: Backset
L: E + 30

APPLICATIONS

For heavy duty residential doors located in high humidity or salt-air conditions, where resistance to corrosion is a prime concern.
For marine applications.
For use with levers only.
Lock function for use with P Series profile cylinders.

STANDARD FEATURES

HANDING	Field reversible
CASE	All stainless steel
FACEPLATE	Removable stainless steel or solid brass 20 x 235mm with square corners
	Optional Features 20 x 235mm radiused 18 x 235mm square or radiused 24 x 235mm square or radiused
LATCH BOLT	Key action
DEADBOLT	Double throw
BACKSET	50mm, 60mm (2 3/8") and 70mm (2 3/4")
STRIKE PLATE	Stock plate provided as in above template Extra strike plates available
HUB	8mm square

STOCK FUNCTIONS

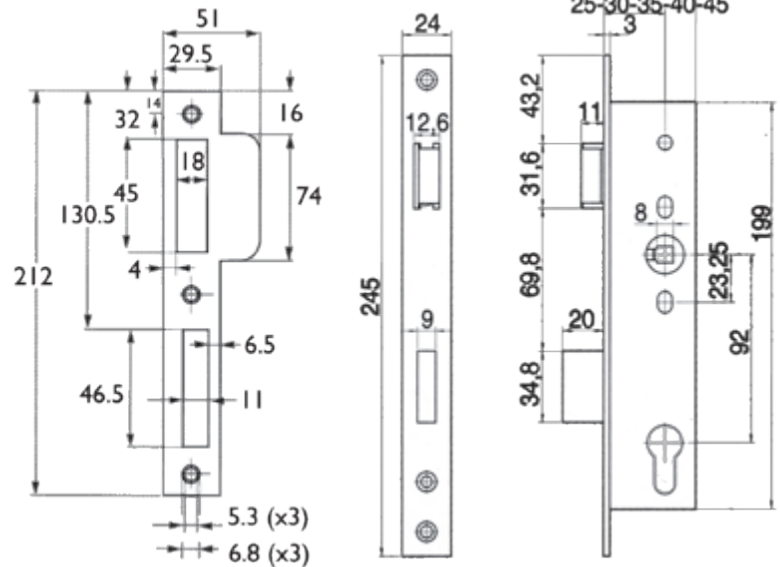
	PASSAGE	LOCK	PRIVACY
50 MM	EU1525SS	EU1556SS	EU1561SS
60 MM	EU1625SS	EU1656SS	EU1661SS
70 MM	EU1725SS	EU1756SS	EU1761SS

Cylinder not included.



EU2000

Narrow-style European mortise lock



APPLICATIONS

For heavy duty commercial and residential doors. For use with levers only. Lock function for use with P series profile cylinders.

STANDARD FEATURES

CASE	High graded steel
FACEPLATE	Stainless steel or solid brass 24 x 245mm with square corners
LATCH BOLT	Zinc/Nickel-plated Key action Field reversible
DEADBOLT	Die cast, zinc/Nickel plated
BACKSET	25mm, 30mm, 35mm, 40mm and 45mm
STRIKE PLATE	Stock plate provided as in above template Extra strike plates available
DISTANCES	Hub to cylinder: 92mm c. to c.
HUB	8mm square
MAINTENANCE	None through thermally stable lubrication
COMPONENTS	Wear-resistant zinc plated

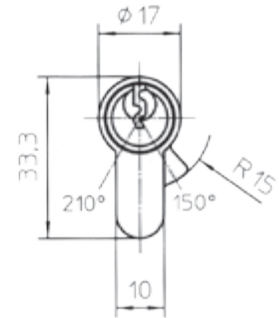
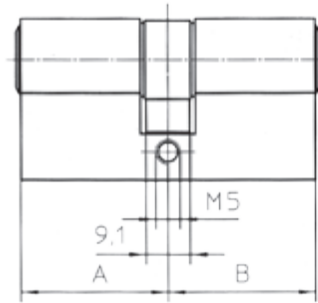
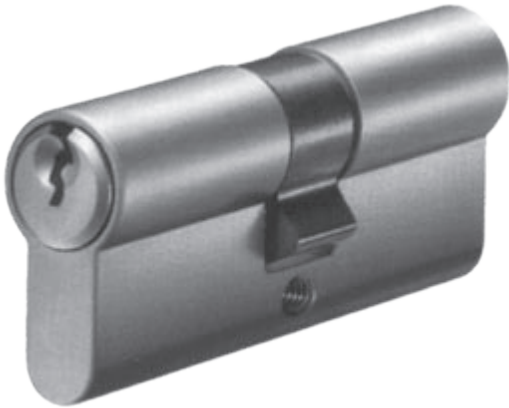
STOCK FUNCTIONS

	PASSAGE	LOCK	PRIVACY
25 MM	EU2025 25	EU2056 25	EU2061 25
30 MM	EU2025 30	EU2056 30	EU2061 30
35 MM	EU2025 35	EU2056 35	EU2061 35
40 MM	EU2025 40	EU2056 40	EU2061 40
45 MM	EU2025 45	EU2056 45	EU2061 45

Cylinder not included.

P Series

European profile cylinder



STANDARD FEATURES

- 5 pin
- Schlage C keyway
- DIN cam
- Works with all AHI European mortise locks

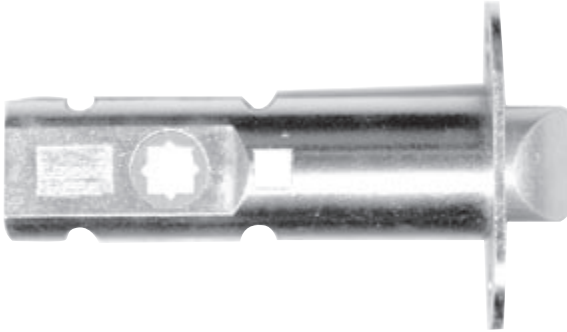
STOCK SIZES

A	B	KEY/KEY	KEY/ THUMBTURN	KEY ALONE*	THUMBTURN ALONE*
30.5	30.5	PKK3131	PKT3131	PK31	PT31
30.5	40	PKK3140	PKT3140	N/A	N/A
35	35	PKK3535	PKT3535	PK35	PT35
35	45	PKK3545	PKT3545	N/A	N/A
40	40	PKK4040	PKT4040	PK40	PT40
45	45	PKK4545	PKT4545	PK45	PT45
50	50	PKK5050	PKT5050	PK50	PT50
55	55	PKK5555	PKT5555	PK55	PT55
60	60	PKK6060	PKT6060	PK60	PT60

*Note: For key alone and thumbturn alone, B = 10mm.

TL1000

28° tubular latch



FEATURES

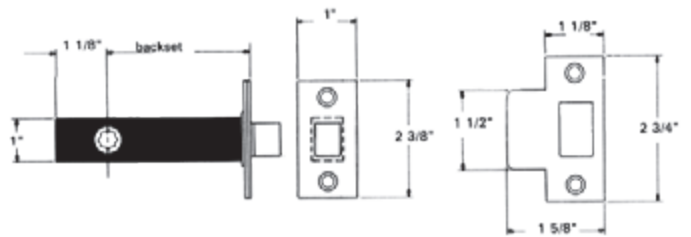
28° tubular latch
Includes standard "D" type strike plate
"T" type and extended curved lip strikes available

STOCK SIZES

	PASSAGE	PRIVACY
60MM (2 3/8")	TL1625	TL1661
70MM (2 3/4")	TL1725	TL1761

FINISHES

619 - Satin Nickel



TL2000

28° tubular latch



FEATURES

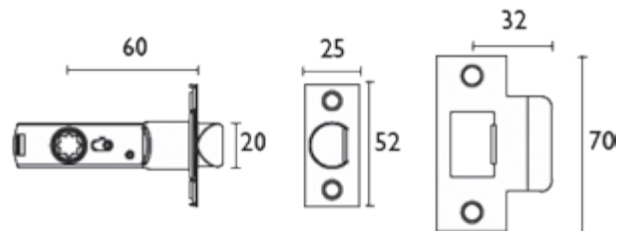
28° tubular latch
Includes standard "D" type strike plate
"T" type and extended curved lip strikes available

STOCK SIZES

	PASSAGE	PRIVACY
60MM (2 3/8")	TL2625	TL2661
70MM (2 3/4")	TL2725	TL2761

FINISHES

619 - Satin Nickel



TL3000

UL-Listed 28° tubular latch



FEATURES

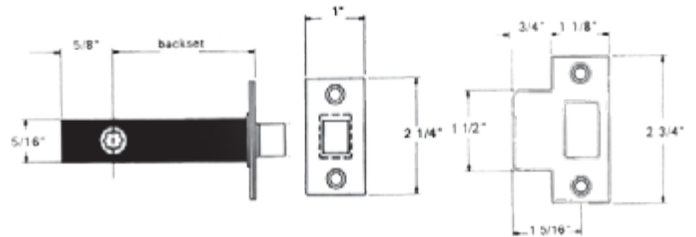
28° tubular latch
Listed 46S3 by U.L.® for installation in all classified swing type fire doors rated up to 3 hours
3mm (1/8") latch front adjustable for flat or bevel doors
Includes standard "D" type strike plate
"T" type and extended curved lip strikes available

STOCK SIZES

	PASSAGE	PRIVACY
60MM (2 3/8")	TL1625	TL1661
70MM (2 3/4")	TL1725	TL1761

FINISHES

619 - Satin Nickel



TB1000

Tubular deadbolt



STOCK SIZES

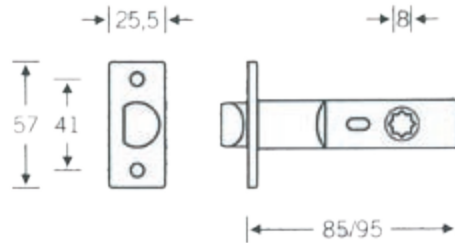
60MM (2 3/8") TB1603

70MM (2 3/4") TB1703

FINISHES

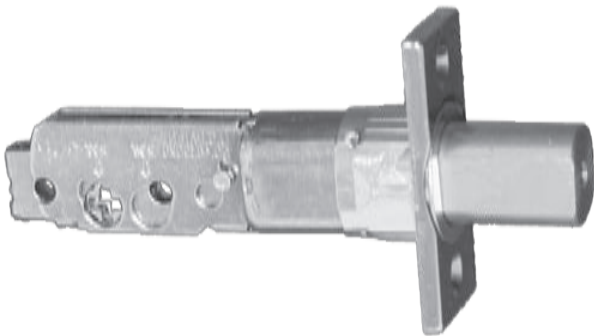
Stainless Steel

PVD Titanium



TB2000

Tubular deadbolt



FEATURES

Adjustable 60mm (2 3/8") or 70mm (2 3/4") backset

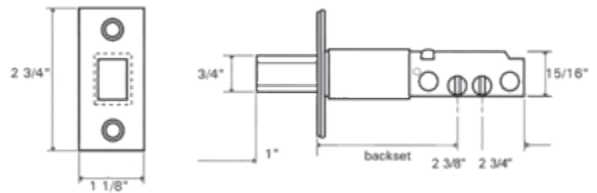
STOCK SIZES

ADJUSTABLE 60MM (2 3/8") / TB2003

70MM (2 3/4") BACKSET

FINISHES

630 - Satin Stainless Steel



TB3000

Tubular deadbolt set



FEATURES

Complete tubular deadbolt set

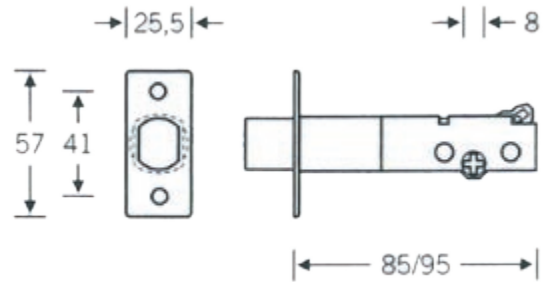
STOCK SIZES

	KEY/ THUMBTURN	KEY BOTH SIDES	THUMBTURN ONE SIDE
60MM (2 3/8")	TB3603	TB3622	TB3694*
70MM (2 3/4")	TB3703	TB3722	TB3794*

*Note: Not for use on pre-drilled doors.

FINISHES

Aluminum Scalp & Strike
Stainless Steel Scalp & Strike



Σ4650

Tubular deadbolt set



FEATURES

Complete tubular deadbolt set
Adjustable 2 3/8" or 2 3/4" backset

STOCK SIZES

	KEY/ THUMBTURN	KEY BOTH SIDES
ADJUSTABLE 60MM (2 3/8") / 70MM (2 3/4") BACKSET	Σ4650	Σ4660

FINISHES

630 - Satin Stainless Steel
Deadbolt finish: brass

