



SLIDING DOOR PROGRAM AT A GLANCE

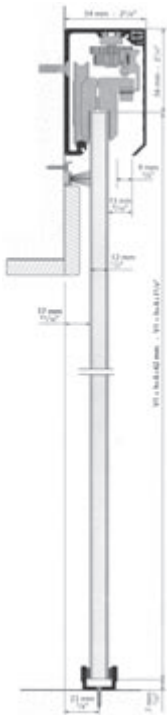
When using the quick reference table to select sliding door hardware, look first for systems designed for door material and with sufficient load capacity for the intended application. Some systems offer a low clearance feature that minimizes the distance between the top of the door and track, effectively hiding the carrier mechanisms. Important to note is the advanced design, in-line ball bearing movement of the GP750 and GL1000. This design has to its advantage smoother, quieter operation as well as a great increase in lateral rigidity when compared to the more common extrusion and roller carriage systems.

System	Operation	Door Type	Max. Load/Door	Low Clearance	Page
UNIKMATIC	Sliding	Glass	90kg / 198lbs	-	SD2
GP750	Sliding	Wood, Metal or Glass	250kg / 550lbs	-	SD4
GL1000	Curved Sliding	Wood or Metal	240kg / 528lbs	-	SD9
NK FOLD 80	Folding	Wood or Metal	40kg / 88lbs	-	SD10
NK 45	Sliding	Wood or Metal	45kg / 100lbs	-	SD12
NK GLASS 45	Sliding	Glass	45kg / 100lbs	-	SD12
SLID FOLD 40	Folding	Wood or Metal	20kg / 44lbs	Yes	SD14
SLID 60	Sliding	Wood or Metal	60kg / 132lbs	-	SD16
SLID RETRAC 60	Sliding	Wood or Metal	60kg / 132lbs	Yes	SD16
SLID 80	Sliding	Wood or Metal	80kg / 176lbs	-	SD18
SLID RETRAC 80	Sliding	Wood or Metal	80kg / 176lbs	Yes	SD18
SLID 125	Sliding	Wood or Metal	125kg / 275lbs	-	SD20
SLID RETRAC 125	Sliding	Wood or Metal	125kg / 275lbs	Yes	SD20
SLID GLASS 125	Sliding	Glass	125kg / 275lbs	Yes	SD20
K 150	Sliding	Wood or Metal	150kg / 330lbs	-	SD22
K 300	Sliding	Wood or Metal	300kg / 660lbs	-	SD22
PL 150	Folding	Wood or Metal	75kg / 165lbs	-	SD24
K 500	Sliding	Wood or Metal	500kg / 1100lbs	-	SD26
K 1000	Sliding	Wood or Metal	1000kg / 2200lbs	-	SD26
160	Slid. Door Lock	Wood or Metal			SD28
1269	Slid. Door Lock	Wood or Metal			SD30
Various	Flush Pulls	Wood or Metal			SD31

Please note: unless otherwise indicated, all measurements are metric. Wherever both metric and imperial measurements are shown, the imperial measurement is an approximation.

UNIKMATIC ●

sliding door hardware



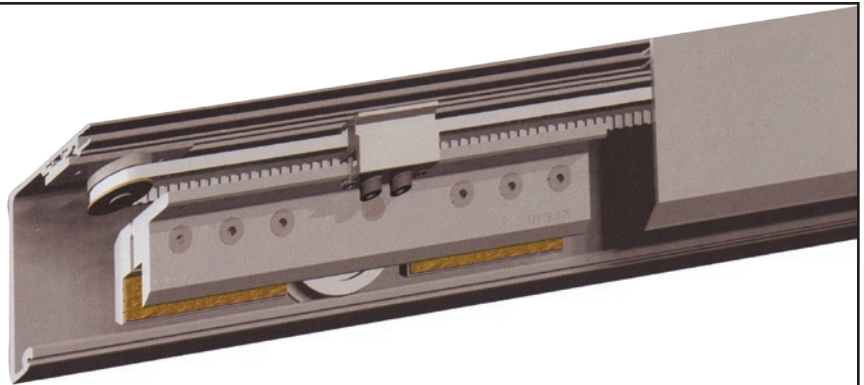
THE UNIKMATIC SLIDING DOOR SYSTEM IS DESIGNED TO FIT PERFECTLY WITH A ROOM'S ATMOSPHERE. EXTREMELY POPULAR FOR ITS DESIGN, INNOVATION AND EASE OF INSTALLATION, THE SYSTEM REQUIRES NO GLASS DRILLING AND FEATURES SYNCHRONOUS DOOR OPENING. AN ATTRACTIVE, REMOVABLE PELMET CONCEALS THE MECHANISMS, WHILE THE ALUMINIUM TRACK CAN SUPPORT PANES UP TO 90KG (198 LBS) EACH. AVAILABLE IN SILVER ANODIZED FINISH, IT IS THE MOST COMPACT TRACK IN OUR RANGE. ADJUSTABLE DOOR STOPS CUSHION THE DOOR AND PREVENT IT FROM HITTING THE FRAME.

UNIKMATIC

sliding door hardware

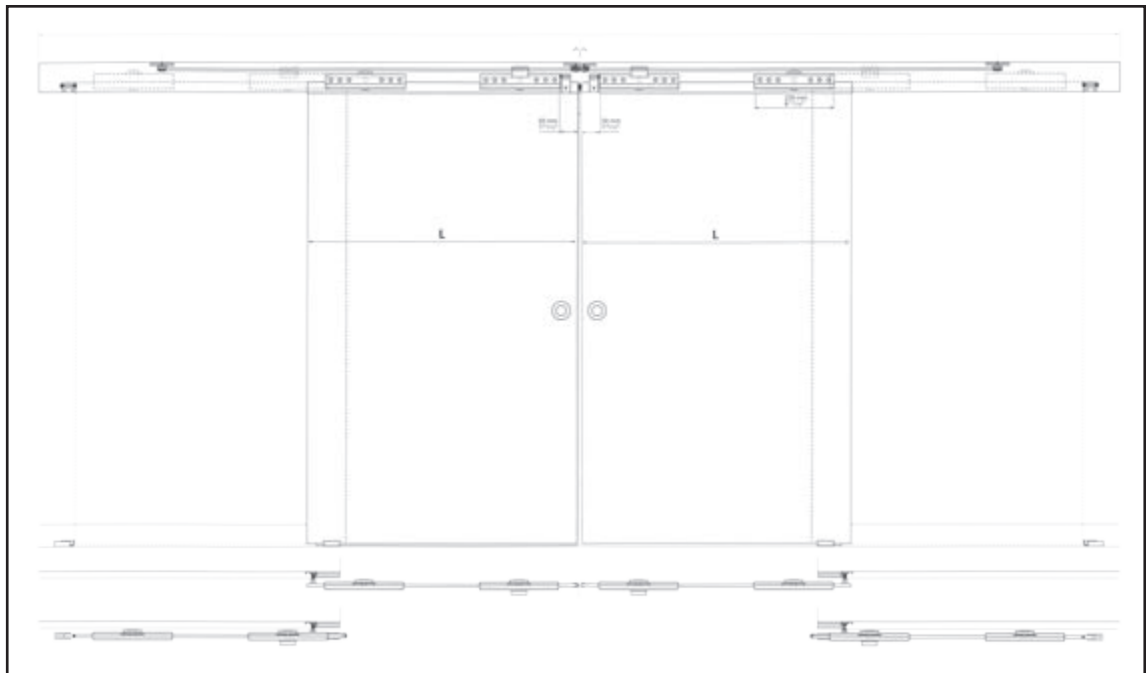
Range of applications

- For sliding unframed glass panels
- Maximum weight per panel 90kg (198 lbs)
- For panels of 12 to 12mm (3/8" to 1/2") in thickness and up to 1.25m (4' 1 3/16") wide
- Maximum track length 5m (16' 4 7/8")



Product features

- Synchronized movement
- Surface mounted with an elegant silver anodized cover
- Installation of glass clamps does not require any machining of glass
- Easy to install
- Complete unit consisting of carrier rail and track, guides, end caps and all accessories



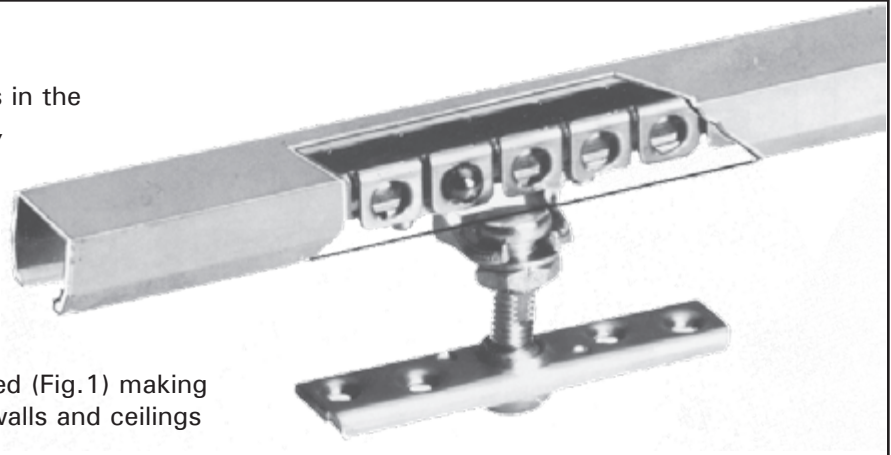
The Unikmatic installed to carry an unframed glass panel.

GP750 ●

sliding door hardware

Range of applications

- For a wide range of applications in the architectural, plant engineering, automotive and ship-building industries
- For all sliding doors
- For high loads
- Wall or ceiling attachment
- For wood, metal or glass doors
- Supports up to 250kg per leaf
- Carrier plates are swivel mounted (Fig.1) making hardware suitable for inclined walls and ceilings



Product features

- Precision ball bearing movement for smooth, quiet operation with maximum lateral rigidity
- Low profile rail
- Swivel-mounted carrier plates
- Low friction value
- Complete unit consisting of carrier rail and track, cage and ball bearings with all accessories

Standard sizes

Table 1

Part #	Door leaf width (a)		Length of rail (f)		Carrier pitch (e)		Max. weight	
	Travel (c) a = c		mm	in	mm	in	kg	lbs
	cm	in						
GP750 31-40	31-40	12.2-15.7	740	29.1	210	8.3	100	220
GP750 41-50	41-50	16.1-19.7	892	35.1	260	10.2	100	220
GP750 51-60	51-60	20.1-23.6	1078	42.4	320	12.6	100	220
GP750 61-70	61-70	24.0-27.6	1230	48.4	350	13.8	100	220
GP750 71-80	71-80	27.9-31.5	1365	53.7	390	15.4	100	220
GP750 81-90	81-90	31.8-35.4	1571	61.9	440	17.3	100	220
GP750 91-100	91-100	35.8-39.4	1686	66.4	490	19.3	100	220
GP750 101-110	101-110	39.7-43.3	1821	71.7	530	20.9	100	220
GP750 111-120	111-120	43.7-47.2	2041	80.4	630	24.8	100	220
GP750 121-130	121-130	47.6-51.2	2176	85.7	680	26.8	100	220
GP750 131-140	131-140	51.5-55.1	2345	92.3	740	29.1	100	220
GP750 141-150	141-150	55.5-59.0	2497	98.3	790	31.1	100	220
GP750 151-160	151-160	59.4-63.0	2649	104.3	420*	16.5*	140	308
GP750 161-170	161-170	63.3-66.9	2835	111.6	450*	17.7*	140	308
GP750 171-180	171-180	67.3-70.9	2987	117.6	480*	18.9*	140	308
GP750 181-190	181-190	71.2-74.8	3173	124.9	525*	20.7*	140	308
GP750 191-200	191-200	75.1-78.7	3325	130.9	550*	21.7*	140	308

* 3 suspension rods for leaves wider than 1500mm

GP750

parts and installation for wood or metal doors

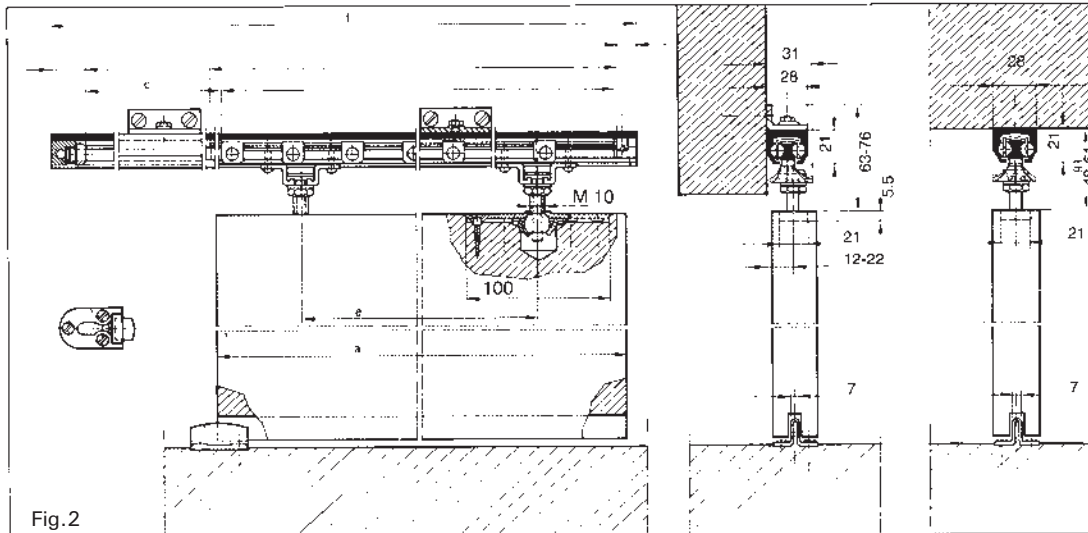
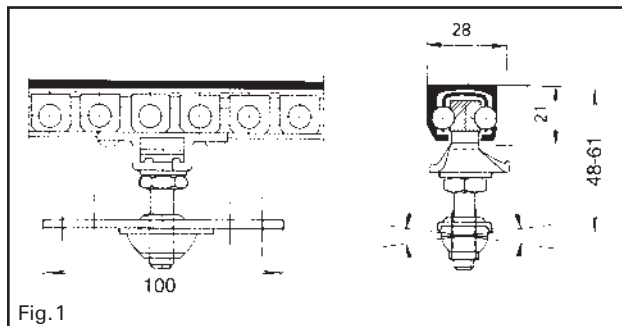


Fig.2 The GP750 (standard size) installed to carry a single-leaf sliding wood or metal door.

The GP750 is supplied standard, as a complete unit including accessories for single-leaf wood or metal doors where travel (c) is equal to door width (a). For non-standard requirements including greater door travel, greater load capacity, or for two-leaf doors please see custom ordering instructions on p.SD6.



GP750

parts and installation for unframed glass doors

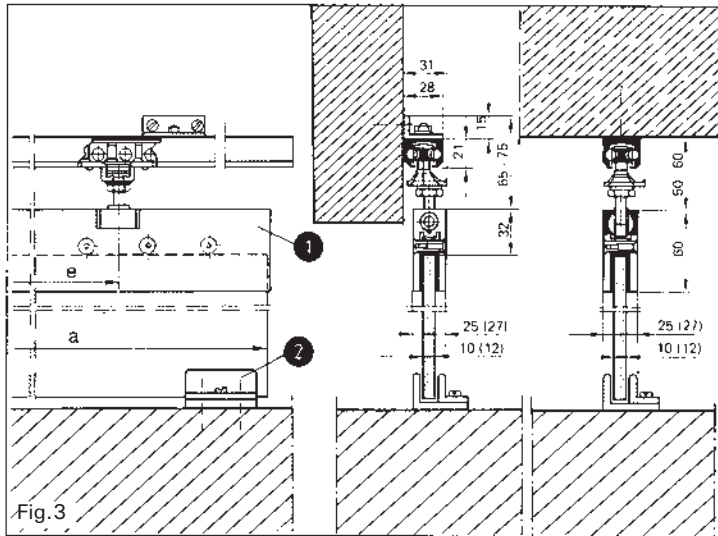


Fig.3 The GP750 (standard size) installed to carry an unframed glass door.

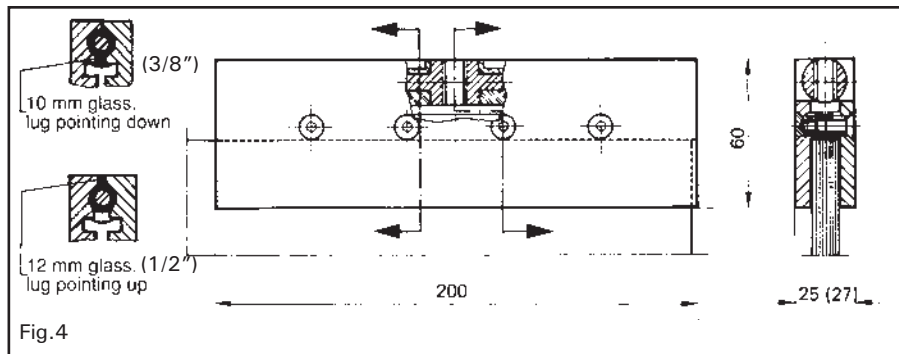


Fig.4

- 1- GSSP1 Clamping plate for unframed glass panel (Fig.4).
 - No drilling of glass required.
 - Max. leaf width 1500mm (59")
 - Max. load / 2 plates 140kg (308lbs)
 - Carrier plate spacing = leaf width (a) - 196mm

- 2- GP75009 Floor guide for glass door (Fig.5)

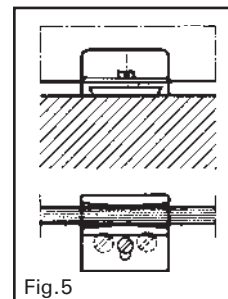
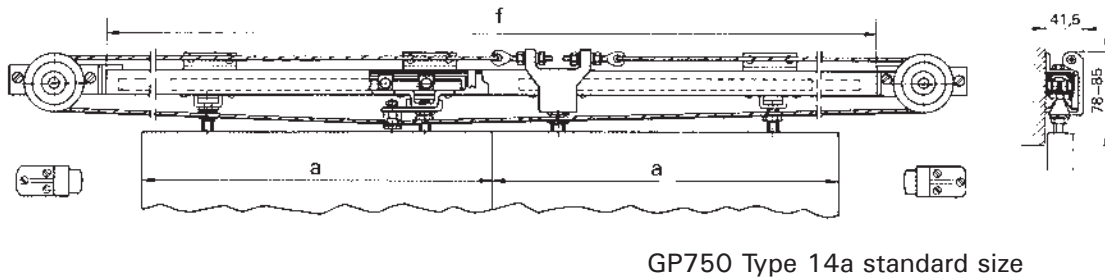
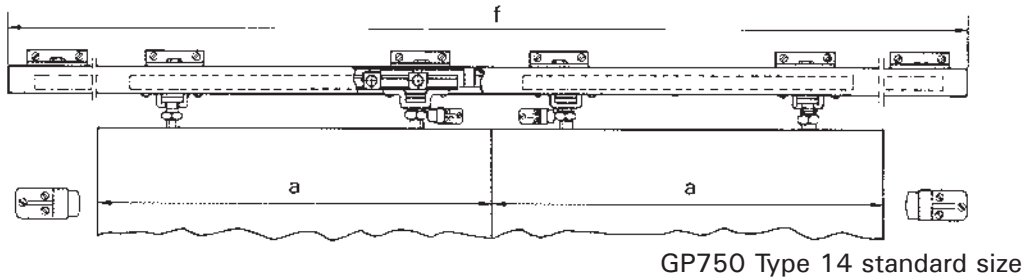


Fig.5

GP750 ●

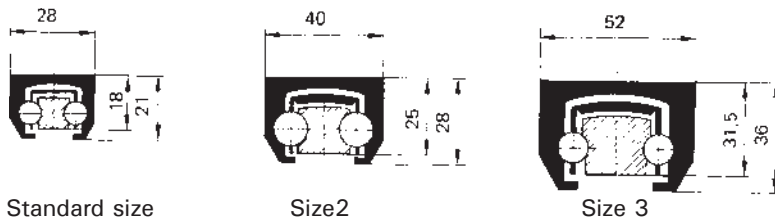
special order options

Versions for two-leaf doors



- For two-leaf doors
- Two tracks fixed inside a carrier rail
- Weight of each leaf up to 75kg (165lbs)
- Type 14:** without wire-rope coupling
for wall or ceiling attachment
- Type 14a:** with wire rope coupling
for ceiling attachment only

Extra heavy duty applications



Available in the same lengths as the standard size, with increased weight capacity.

Size 2: Carries up to 150kg for leaf widths up to 1500mm and 190kg for leaf widths over 1500mm

Size 3: Carries up to 200kg for leaf widths up to 1500mm and 250kg for leaf widths over 1500mm

GP750 ●

custom ordering instructions

Only items listed in Table 1 are standard. For all other orders the following information is required.

Order

GP 750 Sliding door hardware

1 Type

(Indicate **Standard** - for single leaf door
Type 14 - for two-leaf door,
Type 14a - for two-leaf door with wire coupling)

2 Leaf width(a)

(Indicate - mm or inches)

3 Door weight (each leaf)

(Indicate - kg or lbs)

4 Leaf travel (c)

(Indicate - mm or inches)

5 Material

(Specify wood, metal or unframed glass)

6 Attachment

(Indicate ceiling or wall)

GL1000

for curved sliding doors (special order)

Range of applications

-For custom curved single leaf sliding doors of wood or metal

-For wall attachment

-Overall track lengths up to 5500mm (216.5")

-Maximum load:

Size 1: 75kg (165lbs)

Size 2: 100kg (220lbs)

Size 3: 160kg (352lbs)

Size 4: 240kg (528lbs)

-Minimum radius (r):

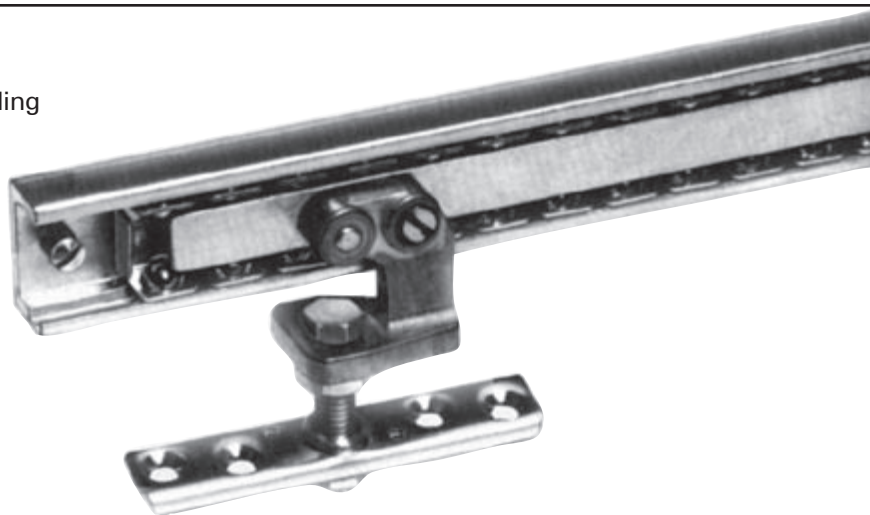
Sizes 1 & 2: 500mm (19.7")

Size 3: 1000mm (39.4")

Size 4: 1500mm (59.1")

-Type A for doors hung on OUTSIDE of curve

-Type B for doors hung on INSIDE of curve



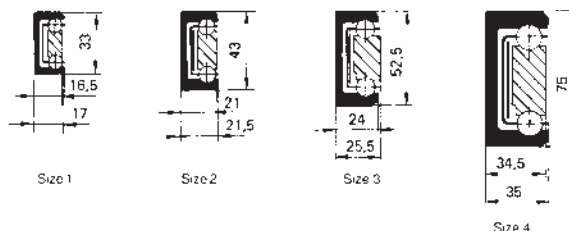
Product features

-Precision ball bearing movement for smooth, quiet operation with maximum lateral rigidity.

-Swivel-mounted carrier plates

-Low friction value

-Complete unit consisting of carrier rail, track, cage, ball bearings and all accessories



With order please specify:

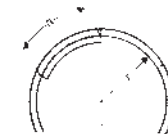
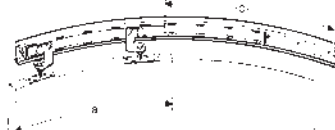
GL1000 Sliding door hardware

- 1 Type - A or B
- 2 Leaf width (a) - mm or inches
- 3 Door weight - kg or lbs
- 4 Leaf travel (c) - mm or inches
- 5 Radius (r) - measured to rear edge of rail

Type A



Type B



NK Fold.80 ●

system for flush folding doors

Range of applications.

NK Fold.80-C System for center hung folding doors.

- For wood or metal sliding doors or wall panels
- Maximum weight per leaf 40kg (88lbs)
- Maximum width of leaf 80 cm (2'7")
- Minimum door thickness 27mm (1 1/16")



NK Fold.80-E System for end hung folding doors

- For wood or metal doors or wall panels
- Maximum weight per leaf 40kg (88lbs)
- Maximum width of leaf 80 cm (2'7")
- Minimum door thickness 27mm (1 1/16")



NK Fold.80-S System for offset hung folding doors

- For wood or metal doors or wall panels
- Maximum weight per leaf 40kg (88lbs)
- Maximum width of leaf 80 cm (2'7")
- Minimum door thickness 27mm (1 1/16")



NK Fold.80

system for flush folding doors

Installation Information

NK Fold.80-C

- Doors pivot at center of leaf
- The first leaf is normally attached to the wall
- The width of the first leaf must be calculated as a function of the width and thickness of full leaves
- Floor track required

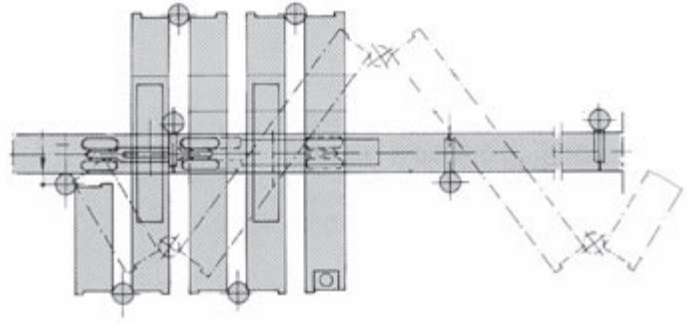


Fig.50

NK Fold.80-E

- Doors pivot on the center line of door at a point 50mm (2") from leading edge
- The first leaf is normally attached to the wall
- The width of the first leaf must be calculated as a function of the width and thickness of full leaves
- Floor track required

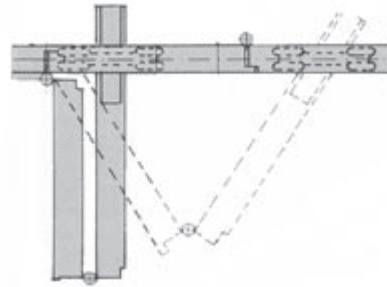


Fig.51

NK Fold.80-S

- Doors pivot in line with knuckle of hinge
- The first leaf is normally attached to the wall
- All doors are the same width
- Separate pieces are required for right or left hand operation
- Floor track required

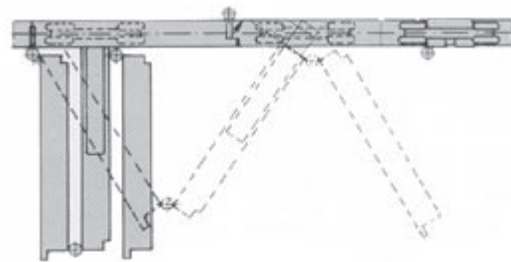


Fig.52

Orders and Specifications

Please contact our technical department for assistance with part numbers and specifications.

NK.45

NK Glass.45

sliding door hardware

Range of applications

NK.45 (Fig. 11)

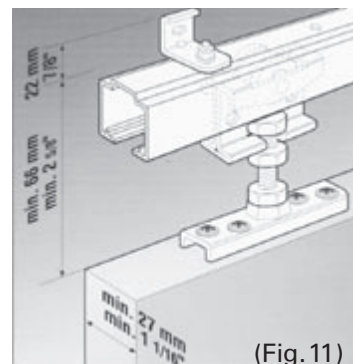
- For sliding wood or metal doors
- Maximum weight per door 45kg (100 lbs)
- Minimum door thickness 27mm (1 1/16")

NK GLASS.45 (Fig. 12)

- For sliding unframed glass panels
- Maximum weight per panel 45kg (100 lbs)
- For panels of 8 to 10mm (5/16 to 3/8") in thickness

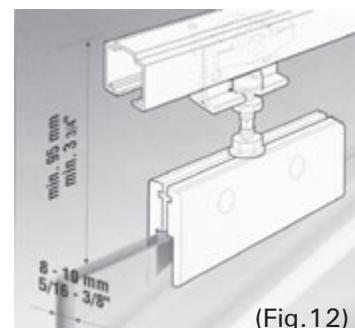
Product features

- Polyacetal wheels with full ball bearings ensure smooth, quiet operation and durability
- Non-corroding aluminum track
- Installation of glass clamps does not require any machining of glass



(Fig. 11)

Installation of NK45



(Fig. 12)

Installation of NK Glass 45

NK.45

NK Glass.45

sliding door hardware

Article numbers

Aluminium track (Fig.13)

NK4501 - 48"

NK4502 - 64"

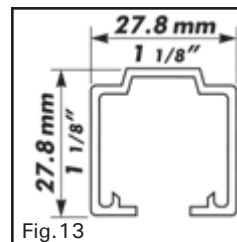
NK4503 - 72"

NK4504 - 84"

NK4505 - 96"

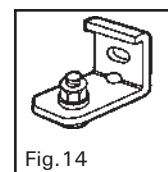
NK4506 - 10 ft

NK4507 - 19 ft



SL3387 (Fig.14)

Wall bracket - to be installed every 0.5m (18")

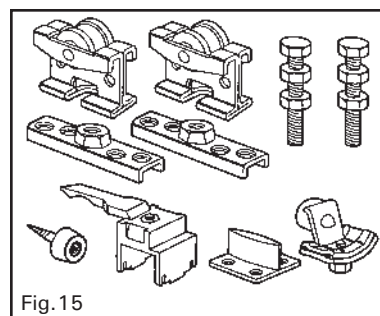


NK857 (Fig.15)

Set of NK.45 accessories for wood or metal doors

Includes:

- 2 roller carriages
- 2 adjustable bolts
- 1 hold open retainer
- 1 stop
- 1 wall bumper
- 1 floor guide
- Screws and mounting instructions

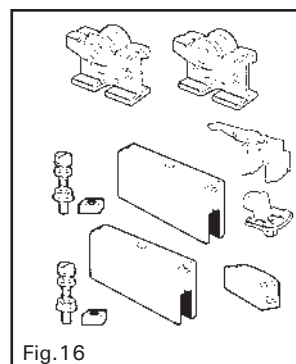


NK3999 (Fig.16)

Set of NK GLASS.45 accessories for unframed glass panels

Includes:

- 2 roller carriages
- 2 adjustable bolts
- 2 glass patch fittings
- 1 retainer
- 1 stop
- 1 hold open retainer
- 1 floor guide
- Screws and mounting instructions



Slid Fold.40 ●

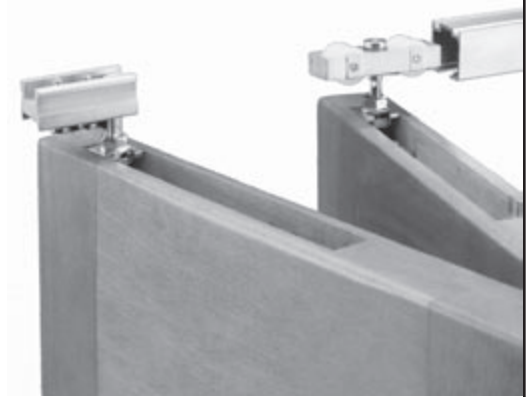
system for flush folding doors

Range of applications

- For folding wood doors of two or four panels
- Maximum weight per set 40kg (88 lbs)
- Maximum panel height 240cm (94.5")
- Maximum panel width 60cm (24")
- For doors of 30 to 35mm (1 3/16 to 1 3/8") in thickness

Product features

- Smooth, quiet operation
- Clearance between top of door and track as little as 15mm (9/16")
- Non-corroding anodized aluminium track
- Requires no bottom track
- Articulation between panels can be produced by any kind of hinge or bolt (not included)



Two-leaf folding door



Four-leaf folding door

4 panel unit



Slid Fold.40 ●

system for flush folding doors

Article numbers

Aluminium track (Fig.17)

SL6801 - 48"

SL6802 - 64"

SL6803 - 72"

SL6804 - 84"

SL6805 - 96"

SL6806 - 10 ft

SL6807 - 19 ft

SF3710 (Fig.18)

Set of SLID FOLD.40 accessories for 2 panels.

Includes:

- 1 swivel bracket
- 1 roller carriage
- 2 attachment brackets
- 1 bottom pivot assembly
- 1 stop
- Screws and mounting instructions

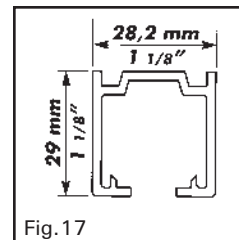


Fig.17

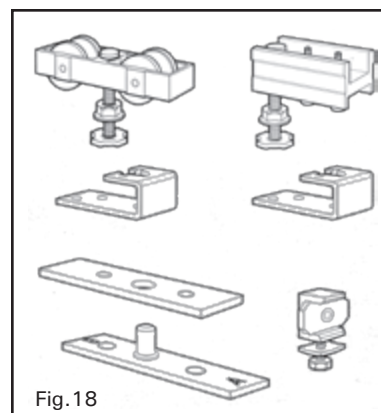


Fig.18

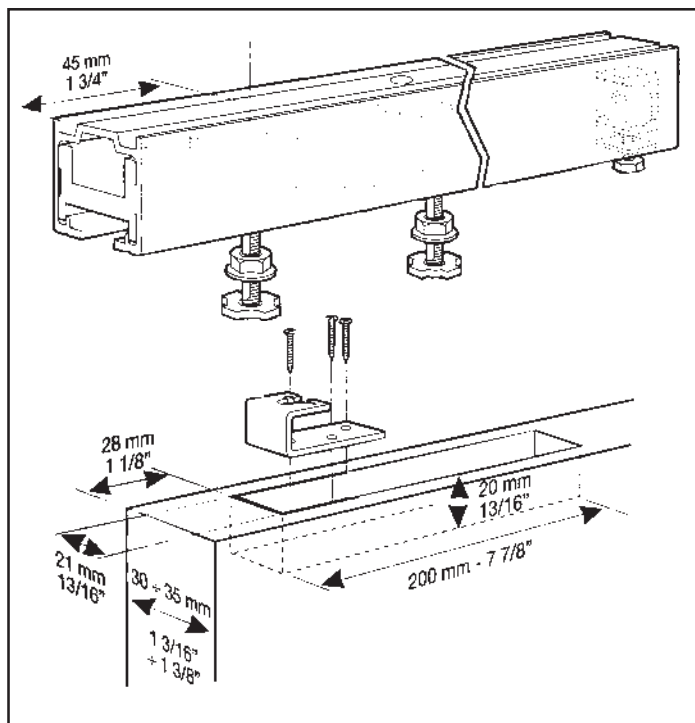


Fig.19 Rail and carrier Installation

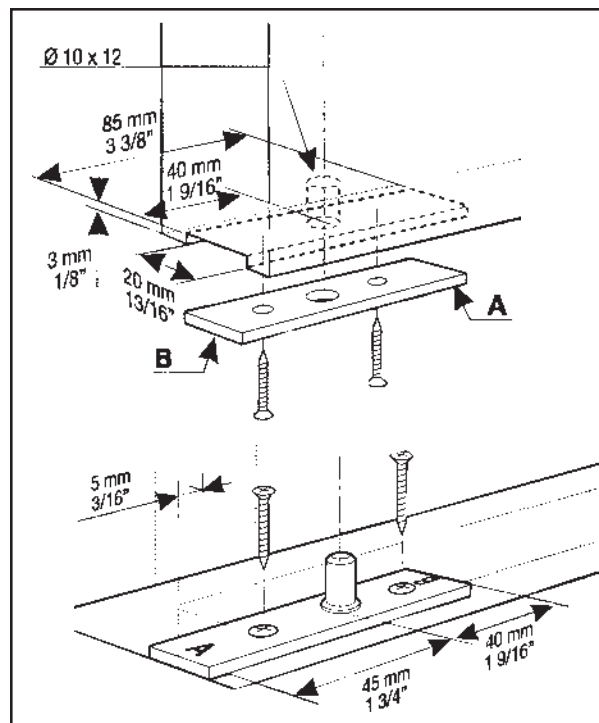


Fig.20 Bottom pivot installation

Slid.60

Slid Retracs.60

sliding door hardware

Range of applications

SLID.60 (Fig.21)

- For wood or metal sliding doors
- Maximum weight per door 60kg (132lbs)
- Minimum door thickness 25mm (1")

SLID RETRAC.60 (Fig.22)

- For wood or metal sliding doors where a minimum clearance between the top of door and track is required
- Maximum weight per door 60kg (132lbs)
- Minimum door thickness 25mm (1")

Product features

- Smooth, quiet operation
- Non-corroding aluminium track
- Clearance between top of door and track as little as 3mm (1/8") using SLID RETRAC.60

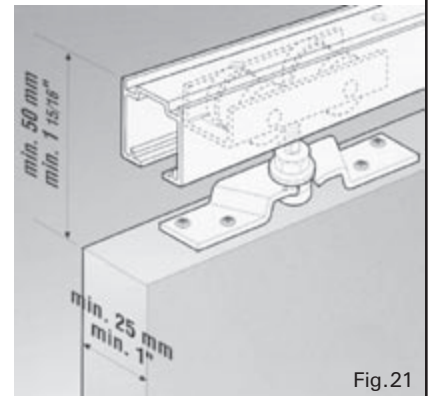
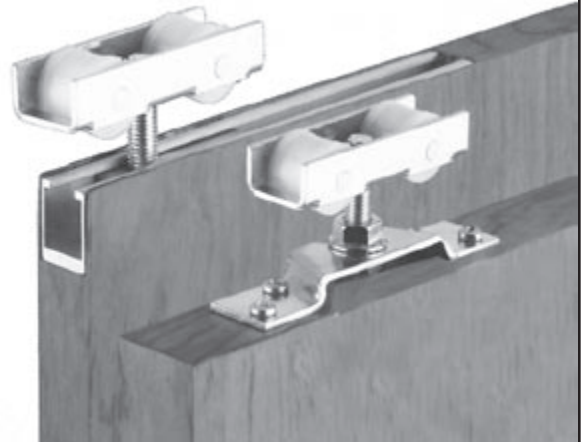


Fig.21

Installation of SLID.60

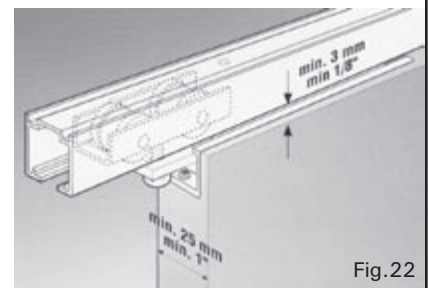


Fig.22

Installation of SLID RETRAC.60

Slid.60

Slid Retrac.60

sliding door hardware

Article numbers

Aluminium track (Fig.23)

SL6801 - 48"

SL6802 - 64"

SL6803 - 72"

SL6804 - 84"

SL6805 - 96"

SL6806 - 10 ft

SL6807 - 19 ft

SL3387 (Fig.24)

Wall bracket - to be installed every 0.5m (18")

SL3722 (Fig.25)

Set of SLID.60 accessories for wood or metal doors

Includes:

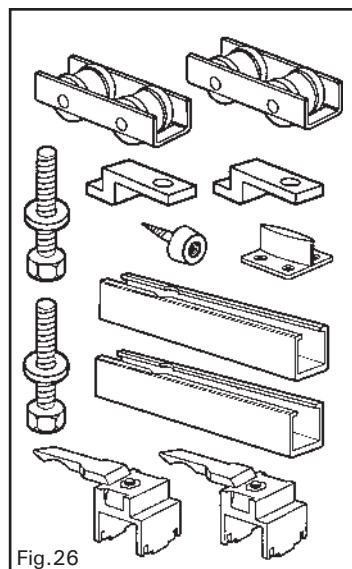
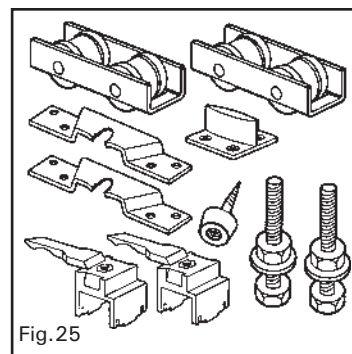
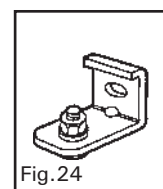
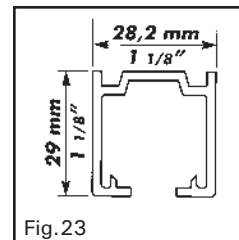
- 2 roller carriages
- 2 adjustable bolts
- 2 brackets
- 2 hold open stops
- 1 floor guide
- 1 wall bumper
- Screws and mounting instructions

SL3723 (Fig.26)

Set of SLID RETRAC.60 accessories for wood or metal doors

Includes:

- 2 roller carriages
- 2 adjustable bolts
- 2 suspension blocks
- 2 hold open stops
- 1 floor guide
- 1 wall bumper
- Screws and mounting instructions



Slid.80

Slid Retracs.80

sliding door hardware

Range of applications

SLID.80 (Fig.27)

- For wood or metal sliding doors
- Maximum weight per door 80kg (176lbs)
- Minimum door thickness 25mm (1")

SLID RETRAC.80 (Fig.28)

- For wood or metal sliding doors where a minimum clearance between the top of door and track is required
- Maximum weight per door 80kg (176lbs)
- Minimum door thickness 25mm (1")

Product features

- Polyacetal wheels with full ball bearings ensure smooth, quiet operation
- Non-corroding aluminium track
- Clearance between top of door and track for SLID RETRAC.80 as little as 3mm (1/8")

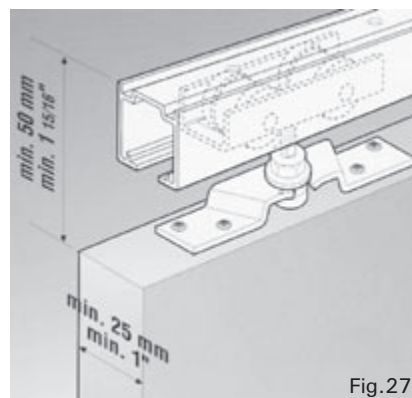
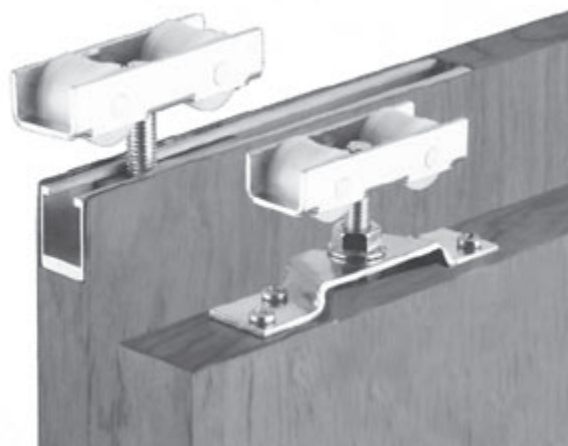


Fig.27

Installation of SLID.80

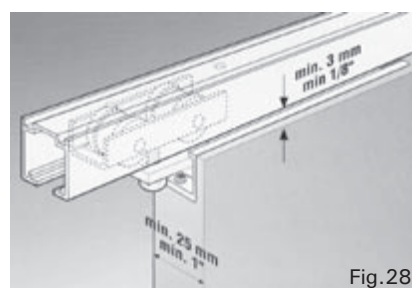


Fig.28

Installation of SLID RETRAC.80

Slid.80

Slid Retrac.80

sliding door hardware

Article numbers

Aluminium track (Fig.29)

SL6801 - 48"

SL6802 - 64"

SL6803 - 72"

SL6804 - 84"

SL6805 - 96"

SL6806 - 10 ft

SL6807 - 19 ft

SL3387 (Fig.30)

Wall bracket - to be installed every 0.5m (18")

SL3720 (Fig.31)

Set of SLID.80 accessories for wood or metal doors

Includes:

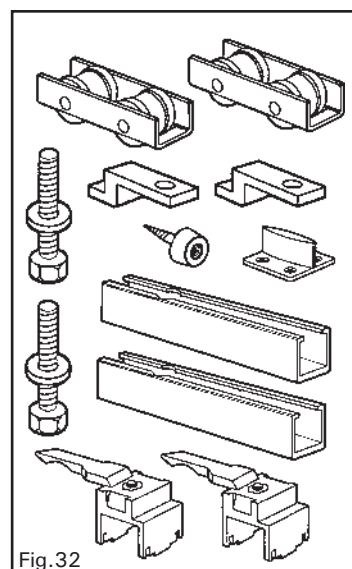
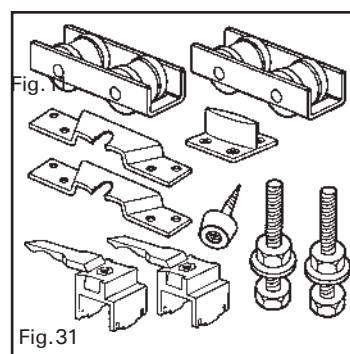
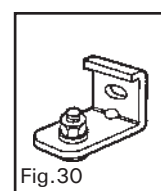
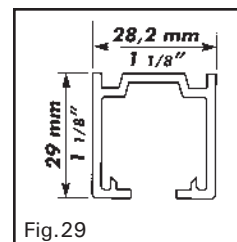
- 2 roller carriages
- 2 adjustable bolts
- 2 brackets
- 2 hold open stops
- 1 floor guide
- 1 wall bumper
- Screws and mounting instructions

SL3727 (Fig.32)

Set of SLID RETRAC.80 accessories for wood or metal doors

Includes:

- 2 roller carriages
- 2 adjustable bolts
- 2 suspension blocks
- 2 hold open stops
- 1 floor guide
- 1 wall bumper
- Screws and mounting instructions



Slid.125

Slid Retrac.125

Slid Glass.125

sliding door hardware

Range of applications

SLID.125 (Fig.33&36)

- For wood or metal sliding doors
- Maximum weight per door 125kg (275lbs)
- Minimum door thickness 35mm (1 3/8")

SLID RETRAC.125 (Fig.34&37)

- For wood or metal sliding doors where a minimum clearance between the top of door and track is required
- Maximum weight per door 125kg (275lbs)
- Minimum door thickness 35mm (1 3/8")

SLID GLASS.125 (Fig.35&38)

- For sliding unframed glass panels
- Maximum panel weight rated at 125kg (275lbs)
- For panels of 12mm (1/2") in thickness



Product features

- Permanently lubricated ball bearing wheels, polyacetal coated, on stainless steel axis
- Non-corroding aluminium track
- Clearance between top of door and track for SLID RETRAC.125 as little as 3mm (1/8")
- Installation of glass clamps does not require any machining of glass



Fig.33



Fig.34



Fig.35

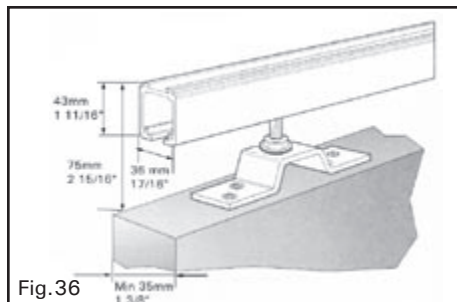


Fig.36

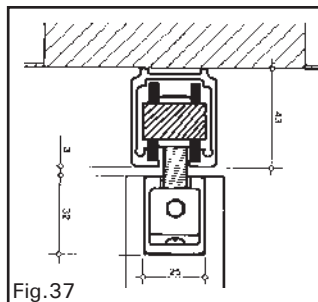


Fig.37

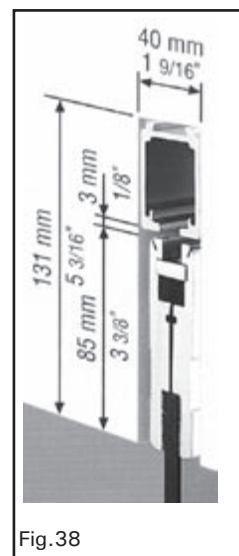


Fig.38

Slid.125

Slid Retrac.125

Slid Glass.125

sliding door hardware

Article numbers

Aluminum track (Fig.39)

SL12501 - 48"

SL12502 - 64"

SL12503 - 72"

SL12504 - 84"

SL12505 - 96"

SL12506 - 10 ft

SL12507 - 19 ft

SL3531 (Fig.40)

Wall bracket - to be installed every 0.5m (18")

SL3505 (Fig.41)

Set of SLID.125 accessories for wood or metal doors

Includes:

- 2 roller carriages
- 2 adjustable bolts
- 2 brackets
- 2 hold open stops
- 1 floor guide
- Screws and mounting instructions

SL3506 (Fig.42)

Set of SLID RETRAC.125 accessories for wood or metal doors

Includes:

- 2 roller carriages
- 2 adjustable bolts
- 2 suspension blocks
- 2 hold open stops
- 1 floor guide
- Screws and mounting instructions

SL3940 (Fig.43)

Set of SLID GLASS.125 accessories for unframed glass panels

Includes:

- 2 roller carriages
- 2 adjustable bolts
- 2 glass patch fittings
- 2 stops
- 1 floor guide
- Screws and mounting instructions

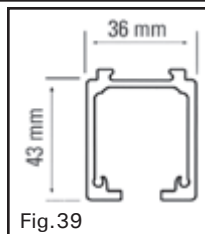


Fig.39

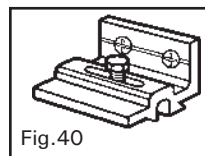


Fig.40

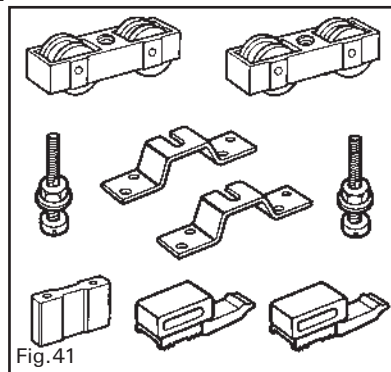


Fig.41

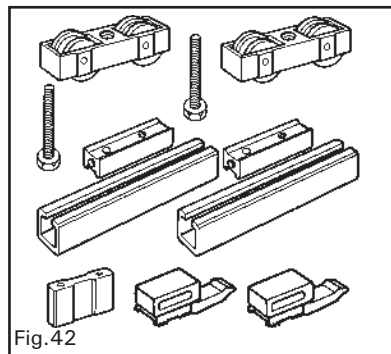


Fig.42

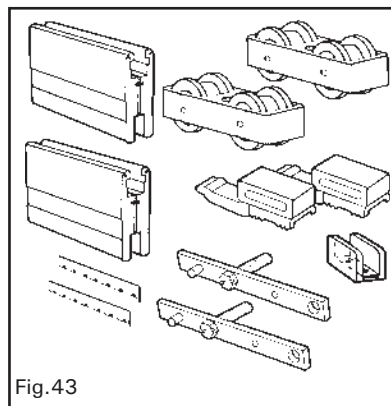


Fig.43

K.150 K.300

sliding door hardware

Range of applications

K.150

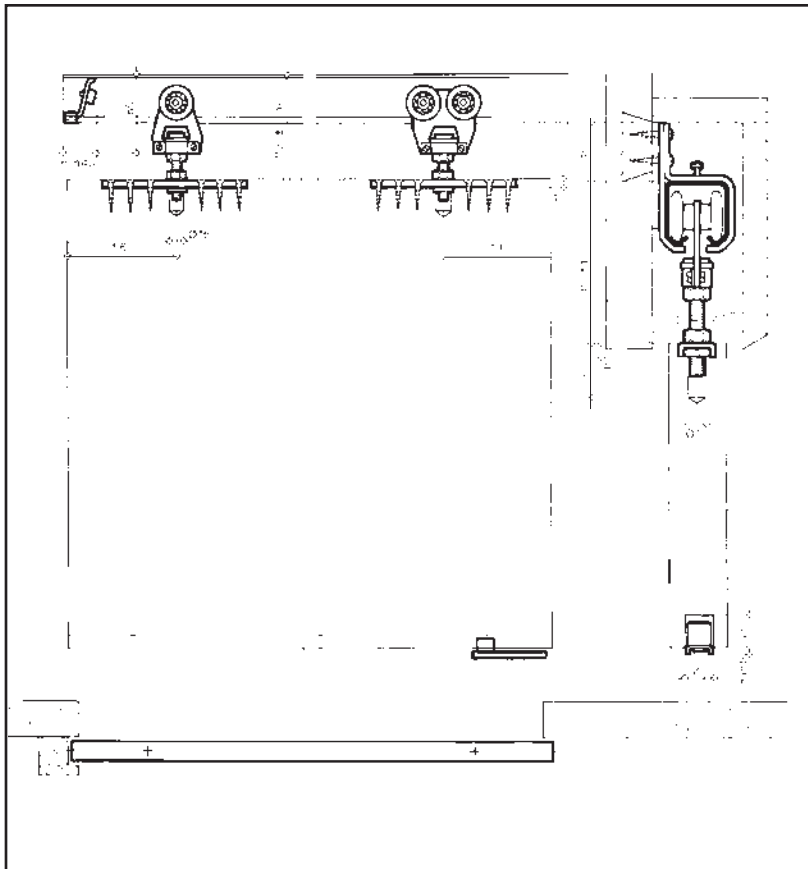
- For wood or metal sliding doors
- For both interior and exterior applications
- Maximum weight per panel 150kg (330lbs)
- Minimum panel thickness 34mm (1 5/16")

K.300

- For wood or metal sliding doors
- For both interior and exterior applications
- Maximum weight per panel 300kg (660lbs)
- Minimum panel thickness 34mm (1 5/16")

Product features

- All wheels mounted on full ball bearings
- Durable "neocrom" antioxidant finish



Installation of K.150, K.300

K.150 K.300

sliding door hardware

Article numbers

Steel track (Fig.44)

K35001 - 48"

K35002 - 64"

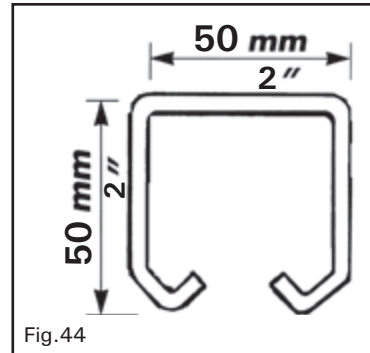
K35003 - 72"

K35004 - 84"

K35005 - 96"

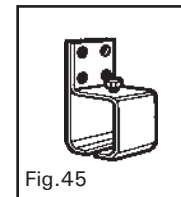
K35006 - 10 ft

K35008 - 16 ft



K5521 (Fig.45)

Wall bracket - to be installed every 0.5m (18")

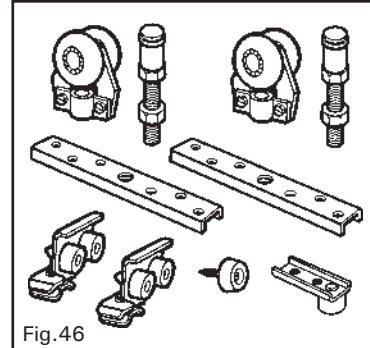


K5502 (Fig.46)

Set of K.150 accessories for wood or metal doors

Includes:

- 2 roller carriages
- 2 adjustable bolts
- 2 brackets
- 2 stops
- 1 bumper
- 1 floor guide
- Screws and mounting instructions

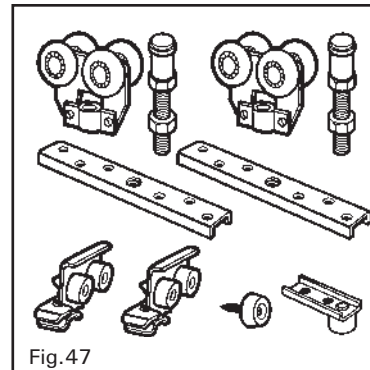


K5602 (Fig.47)

Set of K.300 accessories for wood or metal doors

Includes:

- 2 roller carriages
- 2 adjustable bolts
- 2 brackets
- 2 stops
- 1 bumper
- 1 floor guide
- Screws and mounting instructions



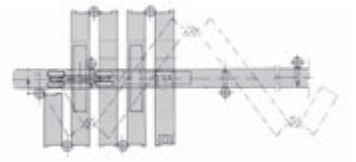
PL.150 ●

system for flush folding doors

Range of applications

PL150-C System for center hung folding doors.

- For wood or metal doors or wall panels
- Maximum weight per leaf 75kg (165lbs)
- Maximum width of leaf 80 cm (2'7")
- Minimum door thickness 34mm (1 5/16")



PL 150-E System for end hung folding doors

- For wood or metal doors or wall panels
- Maximum weight per door leaf 75kg (165lbs)
- Maximum width of leaf 80 cm (2'7")
- Minimum door thickness 40mm (1 5/8")



PL 150-S System for offset hung folding doors

- For wood or metal doors or wall panels
- Maximum weight per leaf 75kg (165lbs)
- Maximum width of leaf 80 cm (2'7")
- Minimum door thickness 40mm (1 5/8")



PL.150

system for flush folding doors

Installation Information

PL150-C

- Doors pivot at center of leaf
- The first leaf is normally attached to the wall
- The width of the first leaf must be calculated as a function of the width and thickness of full leaves
- Floor track required

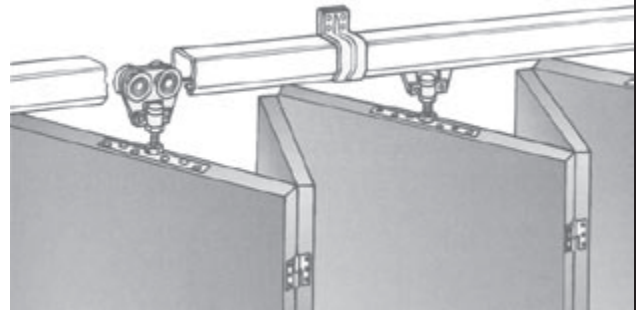


Fig.50

PL150-E

- Doors pivot on the center line of door at a point 50mm (2") from leading edge
- The first leaf is normally attached to the wall
- The width of the first leaf must be calculated as a function of the width and thickness of full leaves
- Floor track required

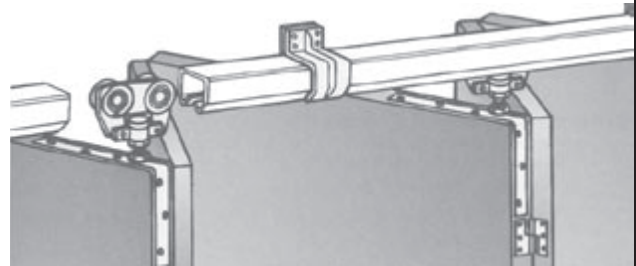


Fig.51

PL.150-S

- Doors pivot in line with knuckle of hinge
- The first leaf is normally attached to the wall
- All leaves are the same width
- Separate pieces are required for right or left hand operation
- Floor track required

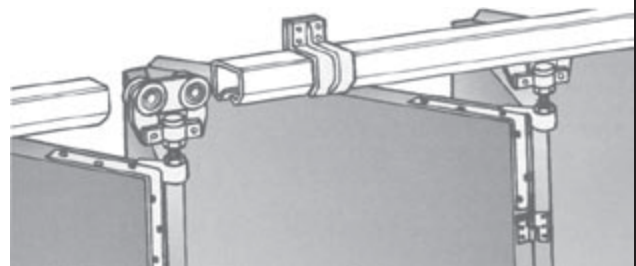


Fig.52

Orders and Specifications

Please contact our technical department for assistance with part numbers and specifications.

K.500 K.1000

sliding door hardware

Range of applications

K.500

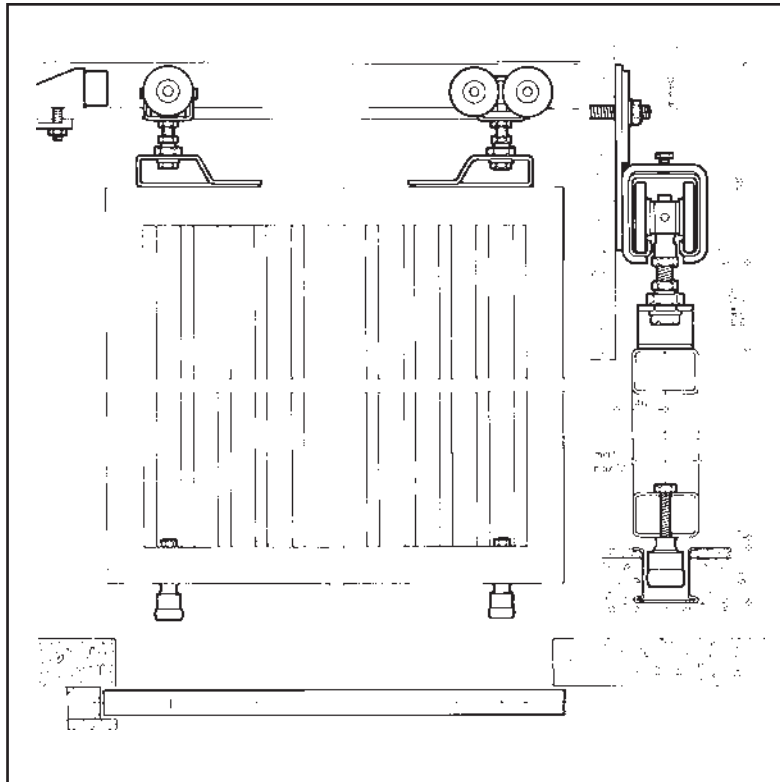
- For wood or metal sliding doors
- For both interior and exterior applications
- Maximum weight per panel 500kg (1100lbs)
- Minimum panel thickness 50mm (2")

K.1000

- For wood or metal sliding doors
- For both interior and exterior applications
- Maximum weight per panel 1000kg (2200lbs)
- Minimum panel thickness 50mm (2")

Product features

- All wheels mounted on full ball bearings
- Height adjustable to up to 55mm (2 1/8")
- Durable "neocrom" antioxidant finish



Installation of K.500, K.1000

K.500 K.1000

sliding door hardware

Article numbers

Steel track (Fig.53)

K15001 - 48"

K15002 - 64"

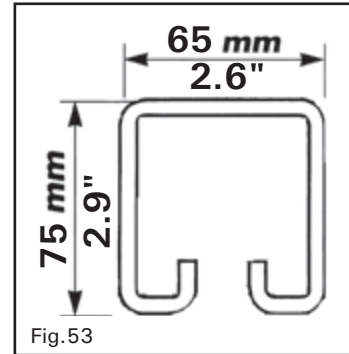
K15003 - 72"

K15004 - 84"

K15005 - 96"

K15006 - 10 ft

K15008 - 16 ft



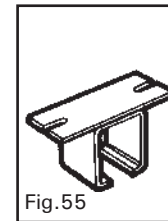
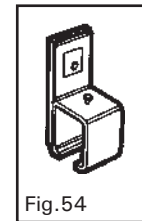
K3881 (Fig.54)

Wall bracket

K3882 (Fig.55)

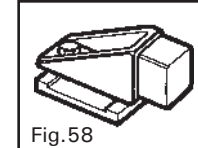
Ceiling bracket

K3881 or K3882 to be installed every 0.5m (18")



K3886 (Fig.58)

Track end stop

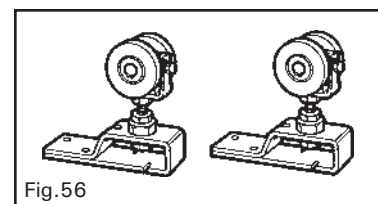


K3807 (Fig.56)

Set of K.500 accessories for wood or metal doors

Includes:

- 2 roller carriages
- 2 adjustable bolts
- 2 brackets
- Screws and mounting instructions

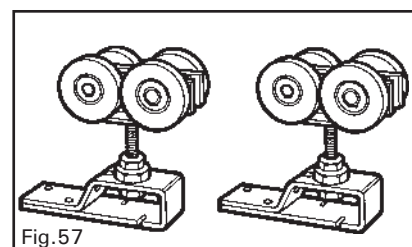


K3808 (Fig.57)

Set of K.1000 accessories for wood or metal doors

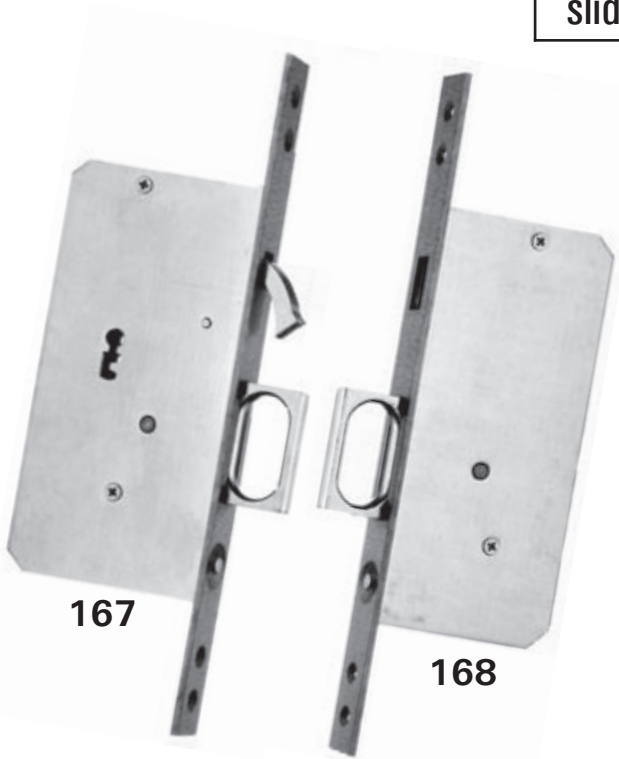
Includes:

- 2 roller carriages
- 2 adjustable bolts
- 2 brackets
- Screws and mounting instructions



160 Series

sliding door lock



167

168

Features

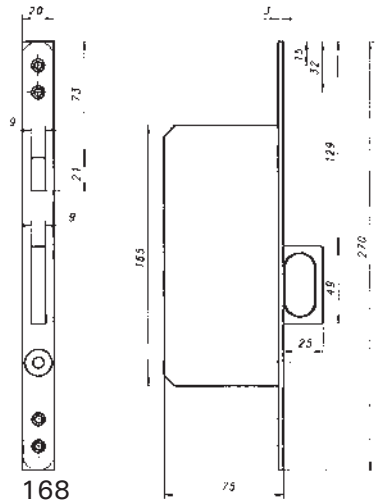
- Hook bolt provides greater tolerance for strike alignment than other common systems.
- Integrated spring loaded edge pull.
- Models for use with either cylinder, removable flap key or permanent turn piece.
- Flush pulls sold separately.
- Not suitable for doors less than 1 3/4" thick.

Lock case

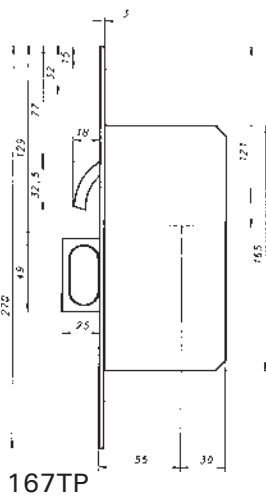
- 167PC For use with profile cylinder
- 167FK For use with flap key (comes with 1 flap key)
- 167TP For use with thumbturn

For double doors

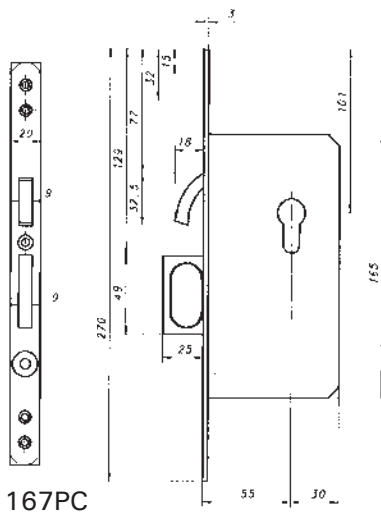
- 168 Mating case



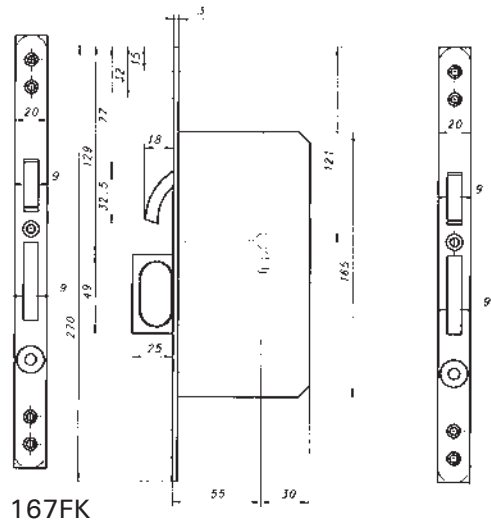
168



167TP



167PC



167FK

160 Series ●

sliding door lock



640S

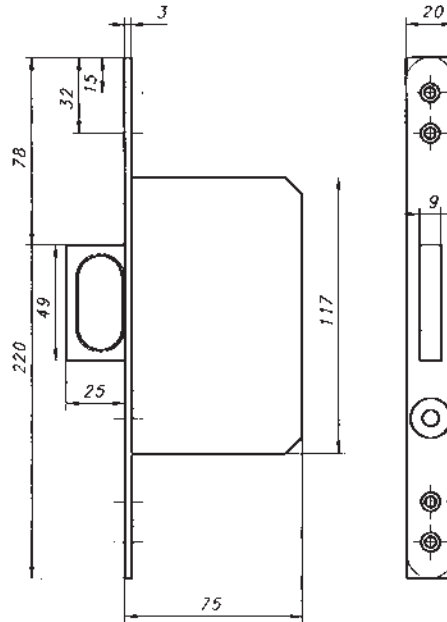
Spare Flap Key



Available flap key profiles

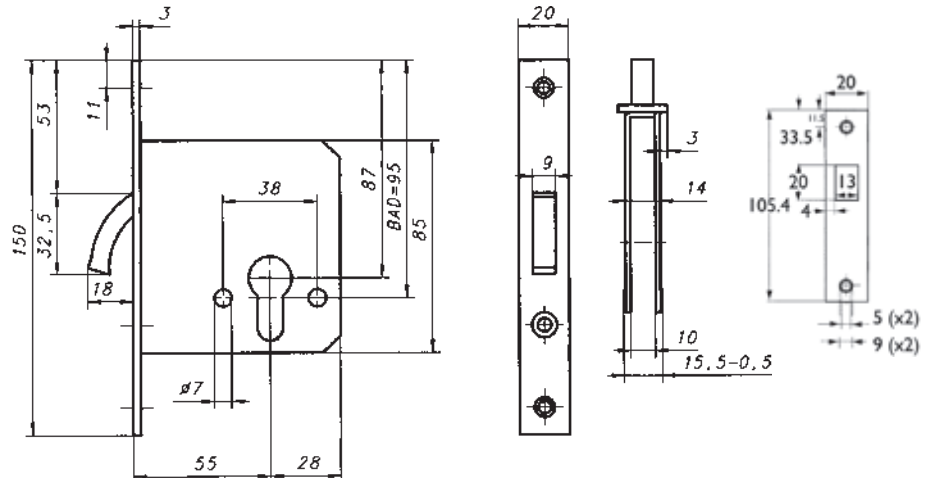
For passage doors

169 Edge pull



Sliding door lock for profile cylinder

162 Lock



1269 Series

sliding door lock

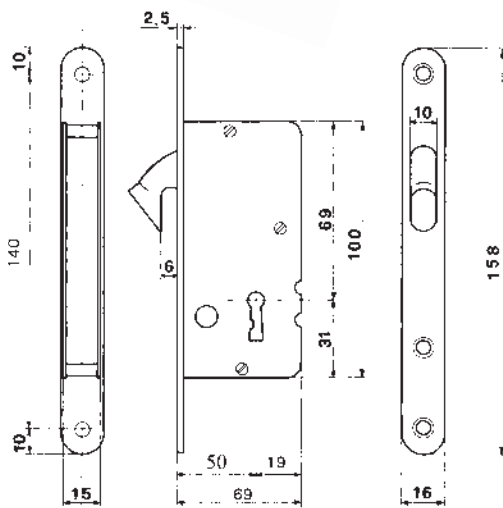


Features

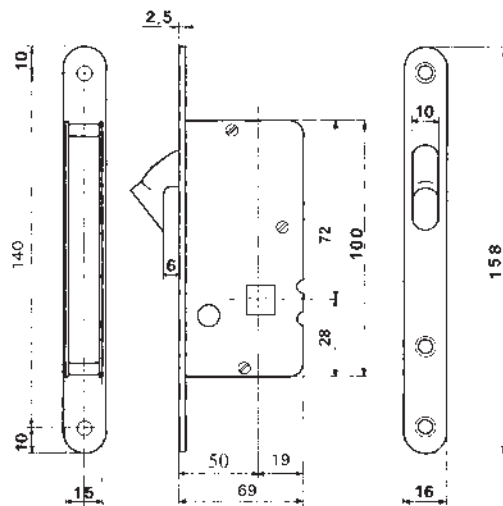
- Compact mortise case
- Models for use with either removable bit key or permanent turn piece
- Available in polished brass, polished chrome or satin chrome
- Flush pulls sold separately
- Not suitable for doors less than 1 3/4" thick

Lock Function

- | | |
|--------|--------------------------------|
| 1269TP | For use with turn piece |
| 1269BK | For use with removable bit key |
| 1271 | Spare bit key |



1269BK



1269TP

flush pulls

FP403



Flush Pull

FP405



Flush Pull

FP404



Pair Flush Pulls

h: 120mm
w: 33.5mm
d: 12mm

Finishes:
Polished Brass
Polished Chrome
Satin Nickel

for skeleton keyhole turnpiece with emergency entry

EPI272



Edge Pull

outside: 29mm
inside: 19mm

Finishes:
Polished Brass
Polished Chrome

FP503



Flush Pull

outside: 56.5mm
inside: 44mm

Finishes:
Polished Brass
Polished Chrome

FP505



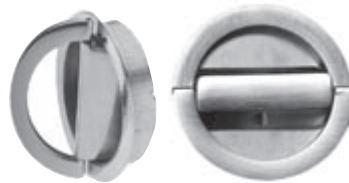
Flush Pull
for skeleton
keyhole

FP504



Pair Flush Pulls
turnpiece with
emergency entry

FP604







Pair Flush Pulls
hinged turnpiece with
emergency entry



outside: 56.5mm
inside: 44mm

Finishes:
Polished Brass
Polished Chrome


flush pulls

F4211	F4212	F4213	e515	
				Finishes: Stainless Steel (All) Aluminium (F-Series only)
Flush Pull	Flush Pull	Flush Pull	Flush Pull	
h: 120mm w: 40mm d: 11.5mm	h: 120mm w: 40mm d: 11.5mm	h: 105mm w: 36mm d: 12mm	h: 120mm w: 40mm d: 12mm	


FSB

4203		4204	
	h: 90mm w: 90mm d: 12mm		h: 70mm w: 70mm d: 11mm
Flush Ring		Flush Ring	Finish: Aluminium

SIGMA LINE

Σ719	
	h: 70mm w: 70mm d: 11mm
Flush Ring	Finish: Stainless Steel

KAPPA LINE

8920	
	h: 99mm w: 48mm d: 9mm
Flush Pull	Finish: Wrought Iron